



Winnipeg Beach School

Welcome Back

September 2011

185 Churchill Road P.O.
Box 130
Winnipeg Beach, MB
R0C 3G0
Phone 389-2176
Fax 389-3864
Website:
www.esd.mb.ca/wbs
Mrs. Shawna Rudd, Principal

WELCOME BACK!!

Welcome back to all our returning WBSchool students. A special welcome to our new students and our Kindergarten class. We hope everyone has a wonderful year!

WINNIPEG BEACH SCHOOL STAFF LIST

Principal	Mrs. S. Rudd
KHIC	Mrs. J. Collette
Kindergarten	Ms. S. Stouffer
Grade 1	Ms. A. Cranston
Grade 2-3	Mrs. C. Antonio
Grade 3-4	Mrs. P. Campbell
Grade 5-6	Mr. J. Gibson
Grade 5-6	Mrs. K. Croy
Grade 7	Ms. D. Hunter/Ms. P. McDevitt
Resource	Mrs. A. Berthaudin
Counseling	Ms. D. Hunter
Music	Mrs. J. Arnason
Phys. Education	Ms. P. McDevitt

Educational Assistants:

Mrs. C. Zelenitsky	Ms. D. Yassenko
Mrs. C. Dola	Mrs. M. Tarnowski
Mrs. C. Melsted	Ms. J. Hadfield
Mrs. S. Weidl	Mrs. P. Specaluk
Ms. S. Theriault	Ms. C. Manulak
Ms. C. Jonasson	

Secretary	Ms. C. Desimpelaere
Librarian	Mrs. M. Olson
Head Caretaker	Mr. D. Larabie
Cleaner	Mr. K. Dundurand



SCHOOL HOURS

8:35 a.m. – Playground supervision begins. Students are not to be at the school before this time. They need to enter via the back playground entrances.

8:50 – Students enter school

First Break:

10:45 – 11:00 – Nutrition Break
11:00 – 11:20 – Activity Break

Second Break:

1:00 – 1:20 – Nutrition Break
1:20 – 1:55 – Activity Break

3:30 – Students are dismissed

4:15 – Office closes

Please keep these break times in mind when scheduling or picking students up for appointments, etc.



NUTRITION BREAK

Help your child plan for the nutrition breaks – pack what you would usually pack for a healthy snack **and** lunch break but explain they are to eat half of it at first break and half at second break. Teachers will also remind students for the first few weeks.

The *canteen* will be open starting September 12, 2011 and students may purchase items at the start of the *second break only*.



BEVERAGE CHOICES

Students are **not** to bring any soft drinks (pop) or energy drinks to school for consumption during school hours.

All students and staff have access to water throughout the day and are encouraged to bring water/ water bottles to school. A new bottle refill fountain is being installed in the school in early September.

This supports our efforts in regards to the Manitoba Healthy Schools initiative.

WELCOME BACK OPEN HOUSE

We invite all WBS families to attend our
OPEN HOUSE
Tuesday, September 27, 2011
6:00 – 7:00 p.m.

Each classroom teacher has prepared a very special *“Welcome Back Quiz”* for all our WBS families. Can your family get 100%?! Be sure to come and challenge yourself!

You will also have an opportunity to meet your child’s teacher(s), our new teachers, see our freshly painted classrooms and enjoy an end of summer treat along with other WBS families.

We hope to see all of you!



ACTIVITY BREAKS

Starting September 12, 2011 students will be invited to the gym and/or music room for activities. Schedule is attached.

STRONG BEGINNINGS

Strong Beginnings is an assessment period at the beginning of the school year where teachers gather student assessment data through observations, conversations, learning activities, paper/pencil tasks, and student reflections about interests and learning.

Strong Beginnings happens throughout the first few weeks of school but also includes two special days that are designated for conferences where students attend school by appointment. This process enables us to plan for a “Strong Beginning” for each student.

On either Friday, September 30 *or* Monday, October 3, each student from Kindergarten to Grade Seven will attend school by appointment for 60 minutes.

There will be NO regular classes on those two days. During the appointment, the student will meet individually with their teacher, as well as work independently or with another teacher, Education Assistant or volunteer.

This is an opportunity for teachers to gather data about each child’s learning that may not be evident during whole class assessment activities. It is also a chance to further develop the teacher-student relationship.

Appointment times will be sent home the second week of school.



TERRY FOX WALK

Wednesday, September 28 is our annual Terry Fox Walk. Starting at 1:00 p.m., students will go on a walk, with their teacher through the town of Winnipeg Beach. We will be collecting a "Toonie for Terry".

In the morning we will be running a fundraiser for cancer research. Watch for more details.



SCHOOL FEES

Just a reminder that school fees (agenda fees, craft fees, band fees, etc.) are now due. Please send them with your child. Thank you.

BAND INSTRUMENTS

A reminder to all Grades 6 and 7 students to make the necessary arrangements around getting their instruments. Band is a compulsory part of the MY Music Program and being prepared for class means having your instrument.



WBS PARENT COUNCIL

Our next meeting will be held on:

Tuesday, September 13, 2011

6:30 p.m.

WBS Library

The WBS Parent Council is open to all parents of children attending WBS and any interested Winnipeg Beach community members. It is a great opportunity to meet other parents, stay informed about school activities, discuss current school issues, learn more about

schools and education today and raise money for special projects. Please plan on joining us.

PAC Executive are:

- Chair: Trish Witt
- Vice Chair: Brenda Henderson
- Secretary: Christina Ambrose
- Treasurer: Dana LaRocque
- Fun Lunch Chair: Kristine Maisey

NSF CHARGES

Unfortunately due to the large number of NSF cheques we deal with each year, we have implemented a NSF charge. If your cheque is returned, we will need payment in cash, as well as a \$7.00 fee to cover bank charges.



PARKING LOT

In an effort to improve safety and to make the parking lot more workable for more people, please follow the following "parking lots rules":

- No parking, no loading at the southeast end of the parking lot; this area is for drivers with a handicap parking pass only; nor is it a turnaround spot.
- Parents waiting for their children may park along the south side walk up to the no parking zone and along the east side of the parking lot.
- Parents parking and coming into the school are asked to use the visitors' parking along the east side of the parking lot.
- Do not park along the west side of the parking lot as this blocks staff from leaving.

- Please remember school zones are no idle zones as mandated by the province; do not leave your car running.
- Please enter the parking lot from the west entrance and leave via the north exit.
- Students on bikes must wait until buses have left the bus loop before leaving the bike rack area.

Thank you for your support. If you have any questions please contact the office.

FOUR YEAR OLDS

If you know of any four year olds who have not registered for “Kindergarten Here I Come” as yet, please encourage them to drop by the school office to register.

BREAKFAST PROGRAM

All students are welcome to come and have a healthy start to their day by joining us for the Breakfast Program. Please use the doors by the playground.

Where: Room 6

When: Every morning
starting **September 19**

Time: 8:40 – 8:55 am



WHO DO I CALL?

When parents have concerns about issues involving their child’s education (academic or behaviour) they should bring it to the attention of the classroom teacher first. Please call to set up a convenient time for both parent and teacher.



WBS CANTEEN

The Grade 7 class will continue to provide a school canteen again this year. The canteen will begin operation on Monday, September 12, 2011.

The following products are for sale:

\$0.50 Items

Granola Bars

Cereal Bars

Ritz Crackers & Cheese

Yogurt Tubes

Cheese & Sticks

Cheesestrings

\$0.75 Items

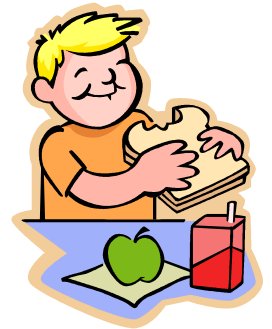
Fruit Cups

Small Chocolate Milk

\$1.25 Items

Kraft Dinner Cups

Big Chocolate Milk



Juices and water are available from the drink machine for **\$1.25 each**. The following products are presently available in the drink machine:

- ✚ plain water
- ✚ flavored fruit water
- ✚ apple juice
- ✚ orange juice
- ✚ five alive juice
- ✚ cranberry cocktail



LUNCHES AND MICROWAVES

Middle Years:

Grades 5, 6, 7 students have access to microwaves in their classrooms for warming food and can do so on a daily basis.

Early Years:

Grades 1, 2, 3, 4 students have access to a microwave one time each week. Please note your child's day on the schedule below.

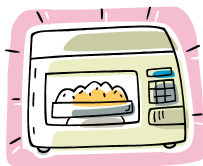
Tuesdays Grade 1

Wednesdays Grade 2

Thursdays Grade 3

Fridays Grade 4

(This schedule begins Monday, Sept. 19)



Don't forget to send something to place the food items on or in when they get zapped.



Make sure food only needs to be warmed up, not defrosted/cooked.



Please ensure you send any needed cutlery with your child as the school **does not** provide such.

Thank you for your cooperation.



SCHOOL VOLUNTEERS

If you are interested in volunteering at the school this year, please contact the office to complete a Child Abuse Registry Check. Please note that all volunteers for any function or activity in the school are subject to a Child Abuse Check and this check **must be renewed each year.**

DIANE GOSSEN INSERVICE

We encourage all our WBS parents to attend this exciting opportunity being offered by ESD:

Bringing the Strength from Within:
an approach to parenting for all ages.

Presented by: Diane Gossen, M.Ed.

September 22, 2011

7:00 – 8:30 p.m.

Gimli High School Cafeteria

STUDENT ATTENDANCE

Our school utilizes a call back system regarding your child's absenteeism. If your child is going to be absent for any reason, please call the school to indicate to us that your child will not be here and the reason for the absence. If we do not hear from you the secretary will phone you. This call back arrangement will ensure that your child is safe and accounted for at all times.

It is the responsibility of the parent/guardian to ensure that each child attend school regularly and punctually in accordance with the provisions of The Public Schools Act and of Evergreen School Division.



STUDENT PICK-UP - DURING SCHOOL HOURS

If for any reason you are picking up your child during school hours, please report to the office first, as you need to "sign your child out". The secretary will call your child out of class. This helps us keep track of students in the building should there be a fire drill etc.

RAINY WEATHER

Please assume your child will be going outdoors for recess everyday. Please send and / or dress them in clothing appropriate for the forecast. If weather is “horrible”, we of course, will remain indoors.



WINNIPEG BEACH SCHOOL HANDBOOK

A copy of our school handbook will be sent home to all families later this month. Following this year, the handbook will only be sent home with new families, so please keep your handbook for future reference.

ESD POLICIES

Here are a few highlights of important policies that you and your child should be aware of. For more information, please consult the ESD website.

Computers:

- show all our computers care and respect
- no visiting of unauthorized sites
- no “cyber - bullying” of any kind



Bus Transportation:

- students must remain seated at all times;
- no food or drink allowed on the bus;
- reasonable noise level;
- demonstrate respect for the bus and the driver.

- Any problems will be addressed by the driver and the school and may result in consequences being put into place.
- Any changes to regular routine must be communicated to driver and to the school (written note preferred.)



Personal Property

- students are discouraged from bringing personal items of value to school.
- the school is not responsible for loss or damage to these items.
- we recommend that all clothing and supplies be clearly labelled in waterproof ink or marker so that lost items can be easily identified and returned to the student.



Medication Administration

- Each year we receive requests for students to be given medication during school hours.
- Parents must complete a form prior to the school administering any medications.
- Forms can be obtained from the office and must be completed each year.
- All medications will be kept in the office and must be in their original containers.

All Electronic Devices

(I-Pods, cameras, cell phones, video games, etc.)

- All electronic devices must be kept out of sight and turned off while on divisional transportation, during school related programs and in the classroom.
- The use of these devices is not permitted in ESD schools and on school property, unless specific permission is given by a teacher/school.
- WBS or ESD will assume no responsibility in any circumstance for the loss, destruction, damage or theft of any personal electronic device.
- School staff may confiscate these devices from students if they are used for unauthorized purposes or at unauthorized times.



News from the Community

ROYAL WINNIPEG BALLET SCHOOL

Registration for ballet and jazz is taking place:

**Monday, September 12, 2011
5 - 8 p.m. at SSES**

Contact:

Kimberly - 643-5288 or

Cheryl - 641-0242

GIRL GUIDES OF CANADA

Girls aged 5 to 14 are invited to join Guiding for fun and friendship! We meet on Thursdays at St. Michael's Church in Gimli.

Sparks (ages 5-6)	6:30 - 7:30
Brownies (ages 7-8)	6:30 - 8:00
Guides (ages 9-11)	6:30 - 8:00
Pathfinders (ages 12-14)	6:30 - 8:00

Registration:

Sunday, September 11

Gimli Rec Centre

noon - 4:00 p.m.

Thursday, September 22

St. Michael's Church basement

7:00 - 8:00 p.m.

GIMLI MINOR HOCKEY REGISTRATION

SEPTEMBER 11, 2011

12 pm - 4 pm

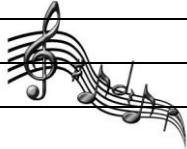

GIMLI REC. CENTRE

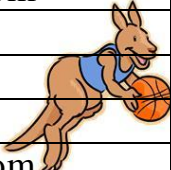

1ST TIME PLAYERS ½ PRICE

(bring your birth certificate & medical #)

RED RIVER COLLEGE

To register for courses, or for information on about courses, check out the Red River College website at www.rrc.ca/gimli, or call 1-204-642-5496 or 1-866-946-3241.

FIRST ACTIVITY BREAK 11:00 – 11:20		
Day 1	Invited to the Gym	Grade 1
	Invited to the Music Room	Grade 3 – 4 Choir
Day 2	Invited to the Gym 	Grade 5 – 6 Boys
Day 3	Invited to the Gym	Grade 2 - 3
	Invited to the Music Room	Grades 5,6,7 Glee Club
Day 4	Invited to the Gym	Grade 7 
Day 5	Invited to the Gym	Grade 3 - 4
	Invited to the Music Room	Grades 5,6,7 Glee Club
Day 6	Invited to the Gym	Grade 5 – 6 Girls

SECOND ACTIVITY BREAK 1:20 – 1:55		
Day 1	Invited to the Music Room	Grade 6 Sectionals
Day 2	Invited to the Gym 	Grade 5 – 6 Girls
Day 3	Invited to the Music Room	Grades 3 – 4 Choir
Day 4	Invited to the Gym	Grades 5 – 6 Boys
Day 5	Invited to the Music Room	Grades 7 Sectionals
Day 6	Invited to the Gym 	Grade 7

Activities start September 12, 2011.





More activities may be added later.

Changes will be announced on the PA in the morning.

WBS CALENDAR OF EVENTS

September 23, 2011	No School – PD Day
September 30, 2011	No School – Strong Beginnings
October 3, 2011	No School – Strong Beginnings
October 5, 2011	KHIC Starts
October 7, 2011	Early Dismissal (12:00)
October 10, 2011	No School – Thanksgiving
October 21, 2011	No School – SAG
November 10, 2011	Remembrance Day Assembly
November 11, 2011	No School – Remembrance Day
November 16 & 17, 2011	Student Conferences – Evening only
November 18, 2011	No School – Student Conferences
December 2, 2011	Early Dismissal (12:00)
December 22, 2011	Early Dismissal (12:00)
December 23 – January 6	No School – Christmas Break
February 17, 2012	No School – PD Day
February 20, 2012	No School – Louis Riel Day
March 9, 2012	Early Dismissal (12:00)
March 13, 2012	Learning Showcase
March 26 – March 30	No School – Spring Break
April 6, 2012	No School – Good Friday
April 18 & 19, 2012	Student Conferences – Evening only
April 20, 2012	No School – Student Conferences
May 17, 2012	Spring Fling Concert
May 18, 2012	Early Dismissal (12:00)
May 21, 2012	No School – Victoria Day
June 1, 2012	No School – School Planning
June 22, 2012	Kindergarten Year End Celebration
June 25, 2012	No School – Administration Day
June 27, 2012	Summer Fun Day (K-4) p.m. only
June 28, 2012	Year End Assembly p.m.
June 29, 2012	Early Dismissal (12:00)

SEPTEMBER AT WINNIPEG BEACH SCHOOL

MONDAY	TUESDAY	WEDNESDAY	THURSDAY	FRIDAY
			1	2
5 Labour Day – NO SCHOOL	6 Administration Day – NO SCHOOL	7 K SCHOOL STARTS 	8	9 K
12 Canteen Starts Peak of the Market fundraiser goes home.	13 K PAC Meeting 6:30 p.m. 	14	15 K	16
19 K Breakfast Program and EY Microwaves Starts First Note Gr. 6 & 7	20 	21 K	22 Diane Gossen 7:00 p.m. GHS	23 PD Day No School
26 K	27 Welcome Back Open House 6:00 – 7:00 p.m. Peak of the Market fundraiser ends	28 K Terry Fox Walk and fundraiser 	29	30 K K-7 Strong Beginnings No School – Students attend by appointment only